

SINK STANDARDS

NOTE: FINISH ALL EXPOSED ENDS AND EDGES

MIRROR APRON

23"

6"

20"

34"

12" 11"

19" MIN

25" CLR.

34"

25" CLR.

34"

TOP OF BOWL

SINK

ADA SINK

TOILET AND TOILET GRAB BAR STANDARD

TOILET PLAN

36"

18" 18" MIN

TOILET SIDE WALL

39" - 41"

15" MIN

42"

12"

TOILET BACK WALL

FLUSH CONTROL ON OPEN SIDE OF W.C. TYP.

6"

36"

12"

24"

17"-18" H.C.

18"

33" - 38"

T/GRAB BAR

TOILET

URINAL

24"

ADA URINAL

17" MAX

BATHTUB PLAN

30" MIN.

12"

MIN.

FOOT WALL

24" MAX

BACK WALL

12" MAX

HEAD WALL

24" MIN.

CLEARANCE PER 607.2

LENGTH OF TUB

TUB GRAB BAR STANDARD SURFACE MOUNTED

FOOT WALL

24"

6"

32"

15"

9"

36"

T.O. GRAB BAR

BACK WALL

48"

24"

24"

6"

6"

17"-19"

21"

17"

36"

T.O. GRAB BAR

IN TUB SEAT REQ'D BLOCKING

HEAD WALL

REQ'D BLOCKING

6"

6"

26"

32"

9"

26"

16" MIN

3'-6"

T/GRAB BAR

4" MAX.

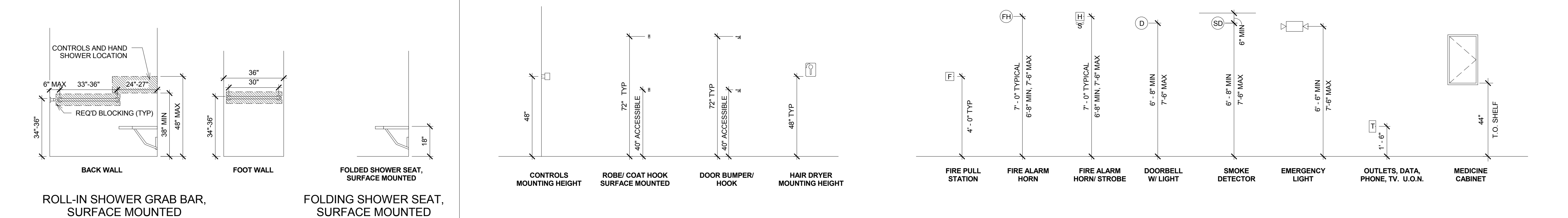
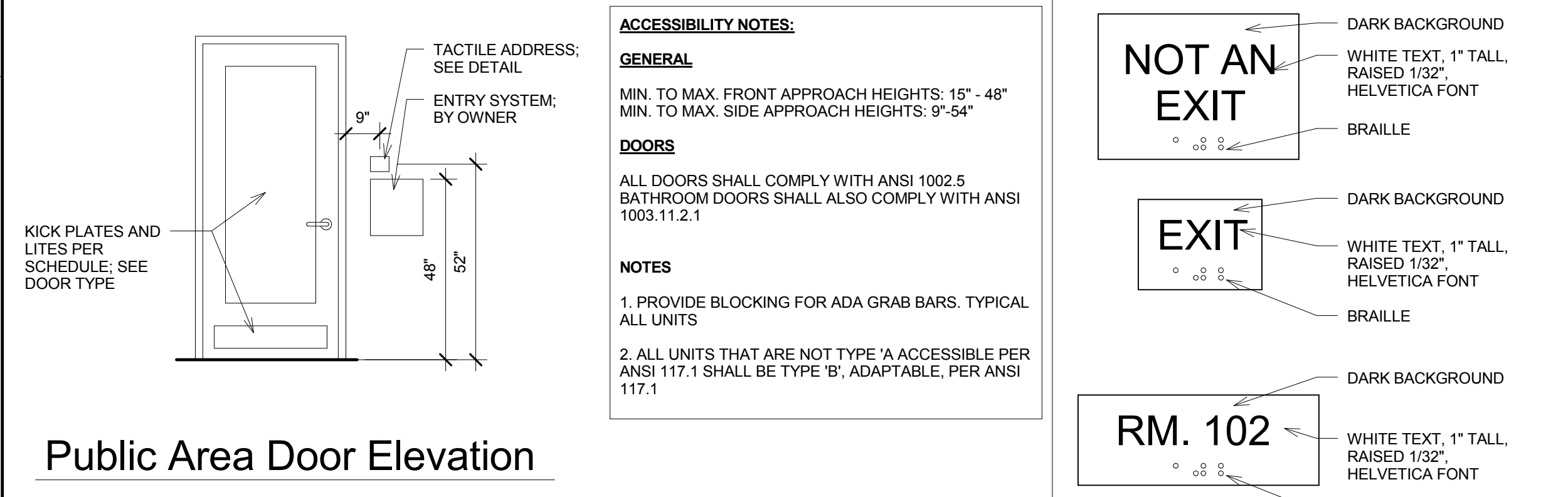


Figure 10. Examples of accessible controls.

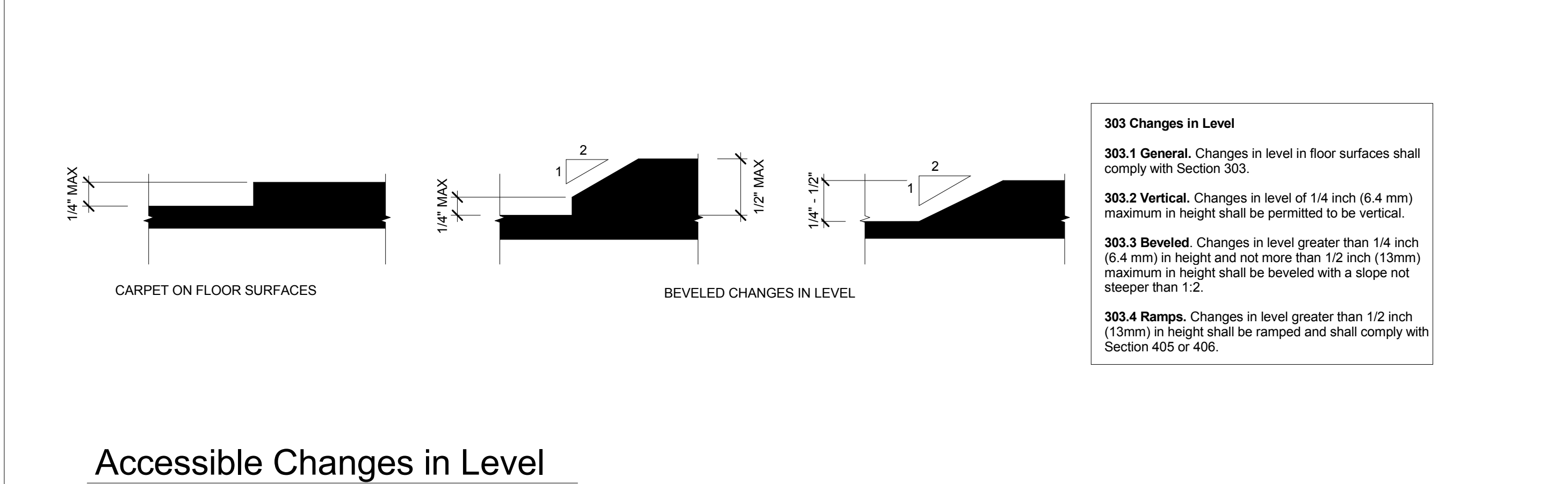
1. LIGHT SWITCH, TYP: The diagram shows a wall-mounted light switch. The height from the floor to the center of the switch is 48 inches.

2. DOOR VIEW FINDER AND SIGNAGE: The diagram shows a door with a viewfinder and signage. The viewfinder is 60 inches maximum high and 48 inches minimum wide. The signage is 62 inches high and 44 inches wide.

3. KITCHEN CABINET: The diagram shows a kitchen cabinet with a counter height of 34 inches and a shelf height of 46 inches maximum from the floor.



The technical drawing illustrates a T-shaped part. The top view (left) shows a rectangular base with a width of 60" MIN and a depth of 36" MIN. A vertical stem is centered on the base, with a width of 12" MIN and a height of 24" MIN. The front view (right) shows the T-shape from the front, with a total height of 60" MIN. The stem's height is 36" MIN, and the base's height is 24" MIN. The base is labeled "CIRCULAR".



NOTE: A SIGN AT THE ENTRANCE TO EACH ACCESSIBILITY REQUIREMENTS

INSTRUCTIONS FOR A TWO-WAY
COMMUNICATION SYSTEM

IN CASE OF EMERGENCY
USE STAIRS UNLESS YOU
ARE UNABLE TO DO SO OR
ARE ASSISTING SOMEONE
WHO IS UNABLE TO USE THE
STAIRS.

IF YOU ARE UNABLE TO USE
THE STAIRS USE PHONE TO
SUMMON ASSISTANCE.

SIGN TO BE PLACED AT EACH ELEVATOR
LANDING WITH A TWO-WAY COMMUNICATION
SYSTEM AND MONITORED 24/7

Signage